

The Funny Giraffe

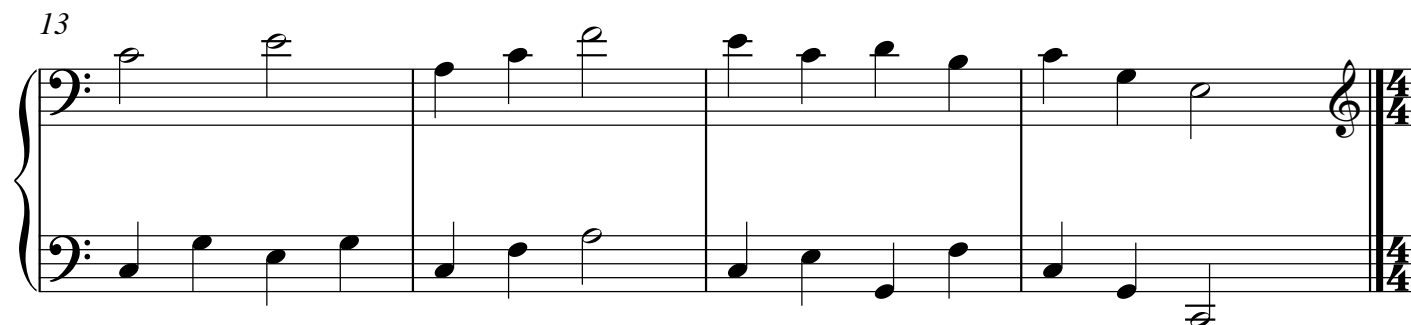
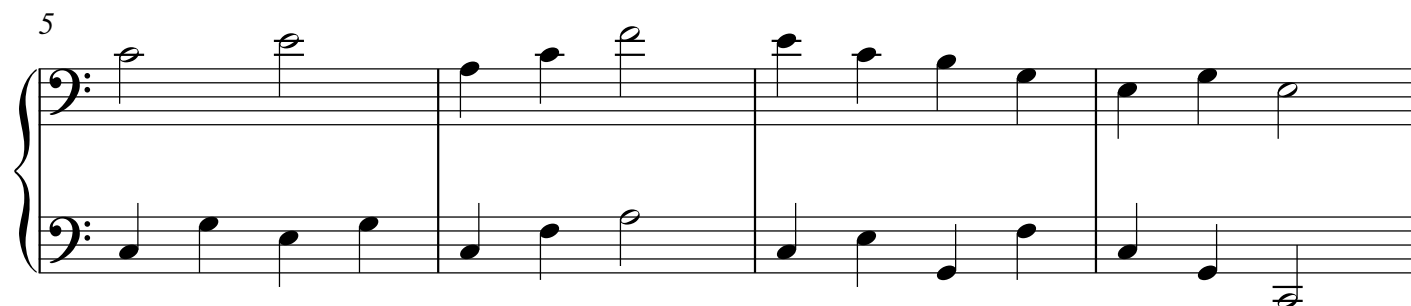
Secondo

Alene Dalton

Lightly

Myriel Ashton

arr. Laurel Hunt Pedersen



The Funny Giraffe

17

Alene Dalton

Primo

Lightly

Myriel Ashton

arr. Laurel Hunt Pedersen

1 *8va*

Yes - ter - day I had to laugh 'cause I saw a big gir - affe, He

Musical notation for measures 1-4 in 4/4 time. The melody is in the treble clef, starting on a whole note G4, followed by quarter notes A4, B4, and C5. The bass line consists of whole notes: G2, B1, D2, and E2. A dashed line labeled '8va' is above the treble staff.

5 *8va*

had a neck so ver - y high, it reached way up in - to the sky.

Musical notation for measures 5-8 in 4/4 time. The melody continues with quarter notes D5, E5, F5, and G5. The bass line continues with whole notes: F2, G2, A2, and B2. A dashed line labeled '8va' is above the treble staff.

9 *8va*

Oh, I was sur - prised to see him eat - ing branch - es from the tree.

Musical notation for measures 9-12 in 4/4 time. The melody continues with quarter notes A5, B5, C6, and D6. The bass line continues with whole notes: C3, D3, E3, and F3. A dashed line labeled '8va' is above the treble staff.

13 *8va*

But I s'pose he is - n't able to eat like me from off the table.

Musical notation for measures 13-16 in 4/4 time. The melody continues with quarter notes E6, F6, G6, and A6. The bass line continues with whole notes: G3, A3, B3, and C4. A dashed line labeled '8va' is above the treble staff. The piece ends with a double bar line.