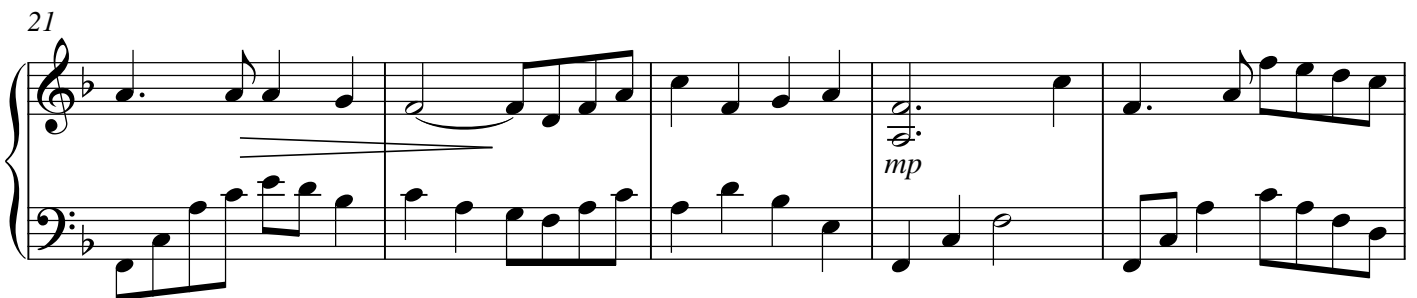
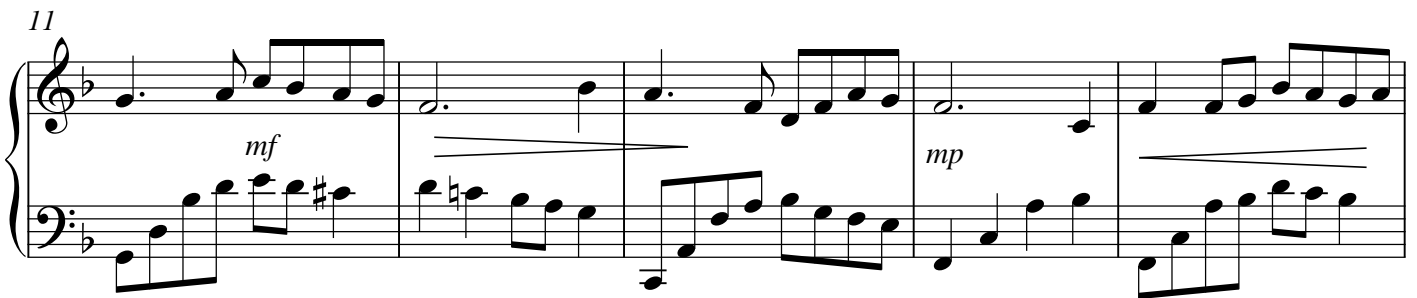
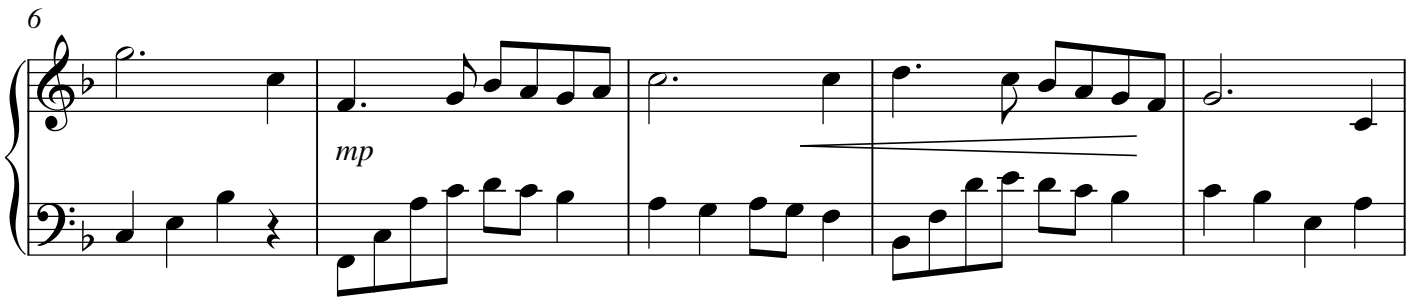


# He Died That We Might Live Again

21

Charlene Anderson Newell, 1938  
arr. Laurel Hunt Pedersen

Gently ♩ = 84-92



26

Measures 26-30. Treble clef: G4 (half), A4 (quarter), B4 (eighth), A4 (eighth), G4 (quarter), F#4 (quarter), E4 (quarter), D4 (quarter). Bass clef: C3 (half), D3 (quarter), E3 (eighth), D3 (eighth), C3 (quarter), B2 (quarter), A2 (quarter), G2 (quarter).

31

Measures 31-35. Treble clef: G4 (half), A4 (quarter), B4 (eighth), A4 (eighth), G4 (quarter), F#4 (quarter), E4 (quarter), D4 (quarter). Bass clef: C3 (half), D3 (quarter), E3 (eighth), D3 (eighth), C3 (quarter), B2 (quarter), A2 (quarter), G2 (quarter).

36

Measures 36-40. Treble clef: G4 (half), A4 (quarter), B4 (eighth), A4 (eighth), G4 (quarter), F#4 (quarter), E4 (quarter), D4 (quarter). Bass clef: C3 (half), D3 (quarter), E3 (eighth), D3 (eighth), C3 (quarter), B2 (quarter), A2 (quarter), G2 (quarter).

41

*mf*

Measures 41-45. Treble clef: G4 (half), A4 (quarter), B4 (eighth), A4 (eighth), G4 (quarter), F#4 (quarter), E4 (quarter), D4 (quarter). Bass clef: C3 (half), D3 (quarter), E3 (eighth), D3 (eighth), C3 (quarter), B2 (quarter), A2 (quarter), G2 (quarter).

46

*mp*

*p*

Measures 46-50. Treble clef: G4 (half), A4 (quarter), B4 (eighth), A4 (eighth), G4 (quarter), F#4 (quarter), E4 (quarter), D4 (quarter). Bass clef: C3 (half), D3 (quarter), E3 (eighth), D3 (eighth), C3 (quarter), B2 (quarter), A2 (quarter), G2 (quarter).

51

Measures 51-54: Treble clef has a dotted quarter note, an eighth rest, and an eighth-note triplet. Bass clef has a quarter note, an eighth rest, and an eighth-note triplet. Measure 52 has a half note in the treble and a half note in the bass. Measure 53 has a dotted quarter note in the treble and a quarter note in the bass. Measure 54 has a half note in the treble and a half note in the bass.

55

Measures 55-58: Treble clef has a dotted quarter note, an eighth rest, and an eighth-note triplet. Bass clef has a quarter note, an eighth rest, and an eighth-note triplet. Measure 56 has a half note in the treble and a half note in the bass. Measure 57 has a dotted quarter note in the treble and a quarter note in the bass. Measure 58 has a half note in the treble and a half note in the bass.

59

Measures 59-62: Treble clef has a dotted quarter note, an eighth rest, and an eighth-note triplet. Bass clef has a quarter note, an eighth rest, and an eighth-note triplet. Measure 60 has a half note in the treble and a half note in the bass. Measure 61 has a dotted quarter note in the treble and a quarter note in the bass. Measure 62 has a half note in the treble and a half note in the bass.

63

Measures 63-66: Treble clef has a dotted quarter note, an eighth rest, and an eighth-note triplet. Bass clef has a quarter note, an eighth rest, and an eighth-note triplet. Measure 64 has a half note in the treble and a half note in the bass. Measure 65 has a dotted quarter note in the treble and a quarter note in the bass. Measure 66 has a half note in the treble and a half note in the bass.

67

Measures 67-70: Treble clef has a dotted quarter note, an eighth rest, and an eighth-note triplet. Bass clef has a quarter note, an eighth rest, and an eighth-note triplet. Measure 68 has a half note in the treble and a half note in the bass. Measure 69 has a dotted quarter note in the treble and a quarter note in the bass. Measure 70 has a half note in the treble and a half note in the bass.